

JUST SHENZHEN



OCT-LOFT
华侨城创意园

LIANHUASHAN
PARK
莲花山公园

SHENZHEN
CONCERT HALL
深圳音乐厅

PING AN INTERNATIONAL
FINANCE CENTRE
平安金融中心

HUAQIANG
NORTH
华强北

INTERNATIONAL TRADE
CENTRE BUILDING
国贸大厦

SHENZHEN
TALENT PARK
深圳人才公园

SHEKOU SEA
WORLD
蛇口海上世界

- HISTORY 历史
- DEVELOPMENT 发展
- CULTURE 文化
- COMMUNITY 人居

Just Shenzhen-A fun way to explore Shenzhen's attractions, history and culture.
正深圳，用趣味好玩的方式带你探索深圳的特色景观和历史文化。

JUST SHENZHEN

International Trade Centre Building | 国贸大厦

Its construction in 1982 was implemented with the “Shenzhen speed” of “building one floor in three days”, which made it the tallest architectural landmark in Shenzhen at the time.

于1982年开始建设,在“三天一层楼”的“深圳速度”下,一跃成为当时深圳最高的建筑地标。

Pass pickup location: International Trade Building Subway Station (line 1) exit A, U station
卡包领取地点: 国贸地铁站 (1号线) A出口U站

Specific route: From exit A, walking time is 4 minutes.
具体路径: A出口, 步行耗时4分钟。

Huaqiang North | 华强北

Constructed in 1982 as China’s largest distribution center for IT products, SEG Plaza is known as China’s “First Electronics Street”.

于1982年开工建设,作为今天中国最大的电子信息产品集散地,被称为“中国电子第一街”。

Pass pickup location: Huaqiang North Subway Station (lines 2 and 7) exit D1, U station
卡包领取地点: 华强北地铁站 (2、7号线) D1出口U站

Specific route: From exit D1 it takes 3 minutes to walk to the opposite side of Le Tao Li Metro Mall, Huaqiang North Electronic World.
具体路径: D1出口, 华强北电子世界1号店乐淘里地铁商场对面, 步行耗时3分钟。

Shenzhen Concert Hall | 深圳音乐厅

Designed by the Japanese master of architecture, Mr. Arakisakia, its exterior wall combines Eastern and Western styles by using the “5 Chinese Elements” colors: yellow, red, blue, white and black.

由享誉国际建筑界的日本著名建筑大师矶崎新先生主持设计,外墙设计融合东西方理念,采用中国五行中“黄红青白黑”五色。

Pass pickup location: Children’s Palace Metro Station (lines 3 and 4) exit D, U station
卡包领取地点: 少年宫地铁站 (3、4号线) D出口U站

Specific route: From exit D, it takes 5 minutes to walk to the east side of Pengcheng 3rd Road in the north part of the Central Book City.
具体路径: D出口, 中心书城北区鹏程三路东侧, 步行耗时5分钟。

Lianhuashan Park | 莲花山公园

Built in 1992, the park looks like a lotus flower in full bloom and is thus named "Lotus Hill" and is one of the “Top 10 Shenzhen Attractions”.

筹建于 1992 年的莲花山,因有七个山头相拥,形状如盛开的莲花,因此而得名“深圳十景”之一。

Pass pickup location: Children’s Palace Metro Station (lines 3 and 4) exit D, U station
卡包领取地点: 少年宫地铁站 (3、4号线) D出口U站

Specific route: From exit D, it takes 5 minutes to walk to the east side of Pengcheng 3rd Road in the north part of the Central Book City.

具体路径: D出口, 中心书城北区鹏程三路东侧, 步行耗时5分钟。



Scan the QR code to start the game.
关注公众号, 开始游戏。

Ping An International Finance Centre | 平安金融中心

Located in Futian’s CBD, this 118-floor building, nicknamed as “Dragon Ridge”, is the tallest skyscraper in Shenzhen.

这座位于福田CBD被称作“龙脊”的建筑,以118层的高度成为目前深圳最高楼。

Pass pickup location: Children’s Palace Metro Station (lines 3 and 4) exit D, U station
卡包领取地点: 少年宫地铁站 (3、4号线) D出口U站

Specific route: From exit D, it takes 5 minutes to walk to the east side of Pengcheng 3rd Road in the north part of the Central Book City.
具体路径: D出口, 中心书城北区鹏程三路东侧, 步行耗时5分钟。

OCT-LOFT | 华侨城创意园

What used to be an old industrial area has since been transformed into a cultural hub where creativity, design and art thrive.

由旧工业区改造而成,融合“创意、设计、艺术”为一体的创意文化产业基地。

Pass pickup collection location: Qiaocheng East Subway Station(line 1)exit A,Penny Black Jazz Cafe
卡包领取地点: 侨城东地铁站 (1号线) A出口黑邮票爵士咖啡

Specific route: From Exit A, walk westwards and turn onto Enping Street. Pass through the Overseas Chinese Town Creative Park to reach the Penny Black Jazz Cafe located on Wenchang Street. The entire trip takes about 15 minutes by foot.

具体路径: A出口向西步行,转入恩平街,穿过华侨城创意园,到达位于文昌街的黑邮票爵士咖啡, 步行耗时15分钟。

Shenzhen Talent Park | 深圳人才公园

As China’s first talent-themed park it pays tribute to the outstanding scholars that have contributed to Shenzhen’s development in the past 40 years.

中国首个以人才为主题的公园,致敬为过去40年深圳发展做出杰出贡献的人才。

Pass pickup location: Houhai Metro Station (line 2) exit E, Talent Park West Gate, U station
卡包领取地点: 后海地铁站 (2号线) E出口人才公园西门U站

Specific route: It takes 10 minutes biking from Exit E to Houhai Road, then turning on to Chuangye Road to reach the Ximen U Station of Talent Park.

具体路径: E出口骑行至后海滨路,进入创业路到达人才公园西门U站, 骑行耗时10分钟。

Shekou Sea World | 蛇口海上世界

With 80% of Shenzhen’s international education resources and almost half of Nanshan’s expat population, Shekou has now become a “mini-UN”.

蛇口汇聚了深圳80% 的国际教育资源,拥有南山近半的外籍居住人口,经过40年改革开放,如今这里已成为一个“小联合国”。

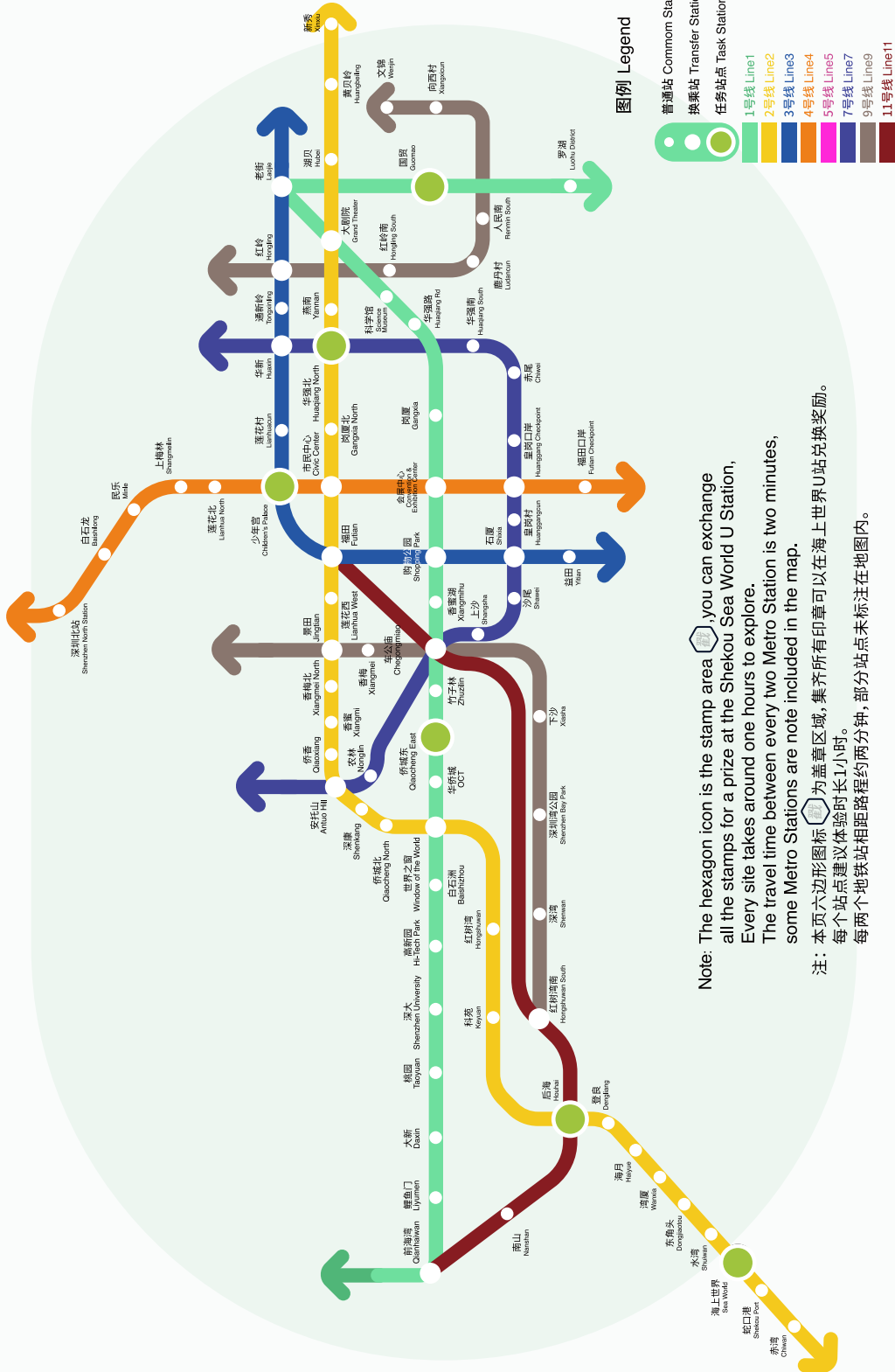
Pass pickup location: Sea World Metro (line 2) exit A, U station
卡包领取地点: 海上世界地铁站 (2号线) A出口U站

Specific route: From exit A, it takes 1 minute to walk along Xinghua Road.

具体路径: A出口, 兴华路旁, 步行耗时1分钟。

Map of Shenzhen Metro

深圳地铁线路图



Note: The hexagon icon is the stamp area, you can exchange all the stamps for a prize at the Shekou Sea World U Station. Every site takes around one hours to explore. The travel time between every two Metro Station is two minutes, some Metro Stations are note included in the map.
注: 本页六边形图标为盖章区域, 集齐所有印章可以在海上世界U站兑换奖励。每个站点建议体验时长1小时。每两个地铁站相距路程约两分钟, 部分站点未标注在地图内。

Lianhuashan Park 莲花山公园



Arrive at the U station of Children's Palace
到达少年宫 U站

- 1

Receive exploratory tasks
- 2

Get to know Lianhuashan Park based on the map
- 3

Complete tasks in the order provided
- 4

Complete all tasks
- 5

Come back to the U station of Children's Palace to get a stamp
- 6

Collect event souvenirs
- 1

领取探索任务
- 2

根据地图了解莲花山
- 3

根据任务顺序依次完成任务
- 4

完成所有任务
- 5

回到少年宫 U站盖印章
- 6

领取活动纪念品

JUST SHENZHEN

JUST SHENZHEN



Scan the QR code to start the game
关注公众号，开始游戏

1

- ☐ Rose 玫瑰花
- ☐ Lotus 莲花
- ☐ Chrysanthemum 菊花
- ☐ Peony 牡丹花



Please match the stickers
and you will get a magic pattern
Enter the answer into
the WeChat Official Account to get the story
请将三张透明贴纸按照方向贴在方框内
你将会得到神奇的图案
将此答案输入公众号获取故事信息

2

- ☐ W
- ☐ H
- ☐ M
- ☐ P



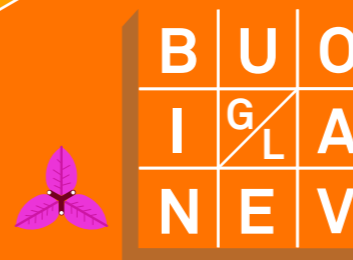
Please go to the square at the peak of Lianhuashan Park
Find the building in the task
Enter the corresponding letter of the building into
the WeChat Official Account to get the story
请去往莲花山山顶广场
眺望远方找到卡牌中对应的建筑
将该建筑对应的字母
输入公众号获取故事信息

3

deng 鄧	yun 云	ping 平
xiu 秀	xiao 小	tian 天
hua 华	zhang 张	zhong 中

Please look at the giant statue at the peak of Lianhuashan Park
Enter the name of the statue into
the WeChat Official Account to get the story
Hint: A leader in Chinese history
请在观景平台观看巨型人物雕像
将该雕像对应的人名输入公众号获取故事信息
提示：中国历史上的一位领导人

4



JLUV7C37F344NC=?

Please follow the clues to uncover the answer
Enter the answer into
the WeChat Official Account to get the story
Hint: Scientific name
请根据线索解开答案
将答案输入公众号获取故事信息
提示：花名

5



How many parks do you think are there in "Shenzhen",
the city of parks?
Enter the answer into
the WeChat Official Account to get the story
你认为作为公园之城的
“深圳”拥有多少公园?
将答案输入公众号获取故事信息

Ping An International Finance Centre 平安金融中心



JUST SHENZHEN

JUST SHENZHEN



Scan the QR code to start the game
关注公众号, 开始游戏

1

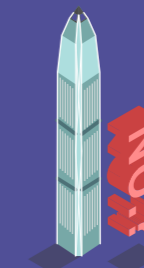


Recommended exploration area:
116th floor of Ping An Financial Center,
Liancheng Xintiandi Food Street, Bar Street, CoCo Park

推荐探索区域:
平安金融中心 116 层观光层、连城新天地美食街、
酒吧街、coco park

2

- ☐ First 第一
- ☐ Second 第二
- ☐ Third 第三
- ☐ Fourth 第四



Where does Shenzhen's tallest building, the Ping An Financial Centre, rank among the world's tallest buildings?
Enter the answer into the WeChat Official Account to get the story

请问深圳第一高楼平安金融中心
在世界高楼中排名第几?
将答案输入公众号获取故事信息

3



Please scan the QR code to complete the information

请扫码完成数据填空

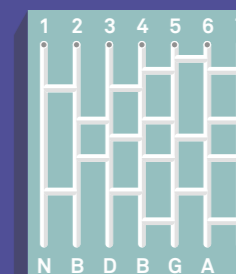
4



Please scan the QR code to complete the building-climbing game

请扫码完成爬楼小游戏

5



Please follow the clues to find the final corresponding answer of 1~7
Example: Starting from Entrance 1, moving from top to bottom, you must turn at the fork in the path, and so the letter corresponding to the exit below is "I"
Enter the answer into the WeChat Official Account to get the story

请根据线索寻找最终1~7对应答案
举例: 1开始, 从上往下, 凡遇
分叉一定要拐, 所以对应字母为 "I"
将答案输入公众号获取故事信息

International Trade Centre Building 国贸大厦



Arrive at the U station of International Trade Centre Building
到达国贸大厦 U站

- 1 Receive exploratory tasks
 - 2 Get to know International Trade Centre Building based on the map
 - 3 Complete tasks in the order provided
 - 4 Complete all tasks
 - 5 Come back to the U station of International Trade Centre Building to get a stamp
 - 6 Collect event souvenirs
-
- 1 领取探索任务
 - 2 根据地图了解国贸大厦
 - 3 根据任务顺序依次完成任务
 - 4 完成所有任务
 - 5 回到国贸大厦 U站盖印章
 - 6 领取活动纪念品

JUST SHENZHEN

JUST SHENZHEN



Scan the QR code to start the game
关注公众号, 开始游戏

1



Please use the map to find the location shown in the map and take a photo with it
Enter "steelyard" into the WeChat Official Account to get the story

请匹配地图寻找图中所示地点
并与其合影拍照
如想了解更多信息
请在公众号回复“天秤”查看更多故事

2



Please use the map to find the location shown in the map and take a photo with it
Enter "Shenzhen Market" into the WeChat Official Account to get the story

请匹配地图寻找图中所示地点
并与其合影拍照
如想了解更多信息
请在公众号回复“深圳墟”查看更多故事

3



Please use the map to find McDonald's and look for the year of opening on the first floor
Enter the 4-digit number into the WeChat Official Account to get the story
Hint: 1X9X

请匹配地图寻找麦当劳
并在一楼地面上寻找与它开业相关的年份
将4位数输入公众号获取故事信息
提示: 1X9X

4



Please locate with the map, and look for the tallest building in China in 1986
Enter "Trade" into the WeChat Official Account to get the story

请匹配地图找到1986年中国最高楼
拍一张自己比它高的照片
如想了解更多信息
请在公众号回复“贸易”查看更多故事

5



Please calculate the construction speed of the building based on the task information
Enter the answer into the WeChat Official Account to get the story
Hint: X Day X Floor

请根据上图计算大厦的增长速度
将答案输入公众号获取故事信息
提示: X天X层楼

Huaqiang North 华强北



Arrive at the U station
of Huaqiang North
到达华强北 U站

- 1 Receive exploratory tasks
- 2 Get to know Huaqiang North based on the map
- 3 Complete tasks in the order provided
- 4 Complete all tasks
- 5 Come back to the U station of Huaqiang North to get a stamp
- 6 Collect event souvenirs

- 1 领取探索任务
- 2 根据地图了解华强北
- 3 根据任务顺序依次完成任务
- 4 完成所有任务
- 5 回到华强北 U站盖印章
- 6 领取活动纪念品

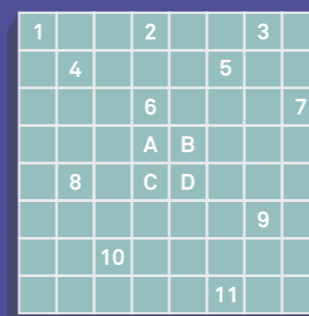
JUST SHENZHEN

JUST SHENZHEN



Scan the QR code to start the game
关注公众号, 开始游戏

1



Please complete the puzzle with the transparent card
Input the letters corresponding to 1~11 into
the WeChat Official Account in order to get clues
请配合透明卡牌完成拼图
将1~11在透明卡牌上对应的字母按照顺序
输入公众号获取线索

2



Scan QR code to complete the electronic puzzle
扫码完成电子拼图

3



Please look for the building corresponding to
the coordinate on the electronic puzzle of Task 2
Enter the building name into
the WeChat Official Account to get the story

请根据任务2的电子拼图和地图
寻找坐标对应的建筑
将建筑名称输入公众号获取故事信息

4



What is the shape of the cross section of the building of Task 3?
Enter the answer into
the WeChat Official Account to get the story
请问题目3提到的建筑的横截面是什么图形?
将答案输入公众号获取故事信息

5



Look for the logo pattern below the cubic sculpture
Scan the QR code and find the right logo to complete the task
Enter the answer into
the WeChat Official Account to get the story

寻找立方体雕塑下方的logo图案
扫码找到正确的logo完成任务
将答案输入公众号获取故事信息

Shenzhen Concert Hall 深圳音乐厅



Arrive at the U station
of Children's Palace
到达少年宫 U站

- 1 Receive exploratory tasks
- 2 Get to know Shenzhen Concert Hall based on the map
- 3 Complete tasks in the order provided
- 4 Complete all tasks
- 5 Come back to the U station of Children's Palace to get a stamp
- 6 Collect event souvenirs

- 1 领取探索任务
- 2 根据地图了解深圳音乐厅
- 3 根据任务顺序依次完成任务
- 4 完成所有任务
- 5 回到少年宫 U站盖印章
- 6 领取活动纪念品

JUST SHENZHEN

JUST SHENZHEN



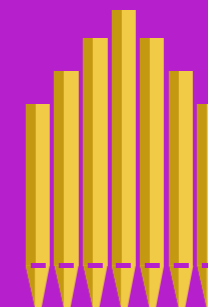
Scan the QR code to start the game
关注公众号，开始游戏

1



Look around and find the five colors of the concert hall
Enter the five letters corresponding to the colors into
the WeChat Official Account to get the story
请探索深圳音乐厅，寻找建筑物上的五种颜色
将五个单词首字母输入公众号获取更多信息

2



- ☐ Kalimba 拇指琴
- ☐ Organ 管风琴
- ☐ Piano 钢琴
- ☐ Whistle 口哨

What instrument is shown in the picture?
Enter the answer into
the WeChat Official Account to get the story
请问图中展示的是何种乐器?
将答案输入公众号获取更多信息

3

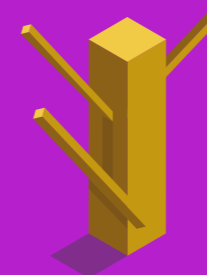


- ☐ Saturday 星期六
- ☐ Wednesday 星期三
- ☐ Sunday 星期日
- ☐ Friday 星期五

Please scan the QR code to enter the official
website of the Concert Hall
Enter the time of "Afternoon Music Time" into
the WeChat Official Account to get the story

请扫码进入音乐厅官网
将"Afternoon Music Time"的时间
输入公众号获取故事信息

4



Look for building structures that resemble
the elements in the picture
Enter the structures' name into
the WeChat Official Account to get the story

找到图中的建筑结构并将其名称
将答案输入公众号获取更多信息

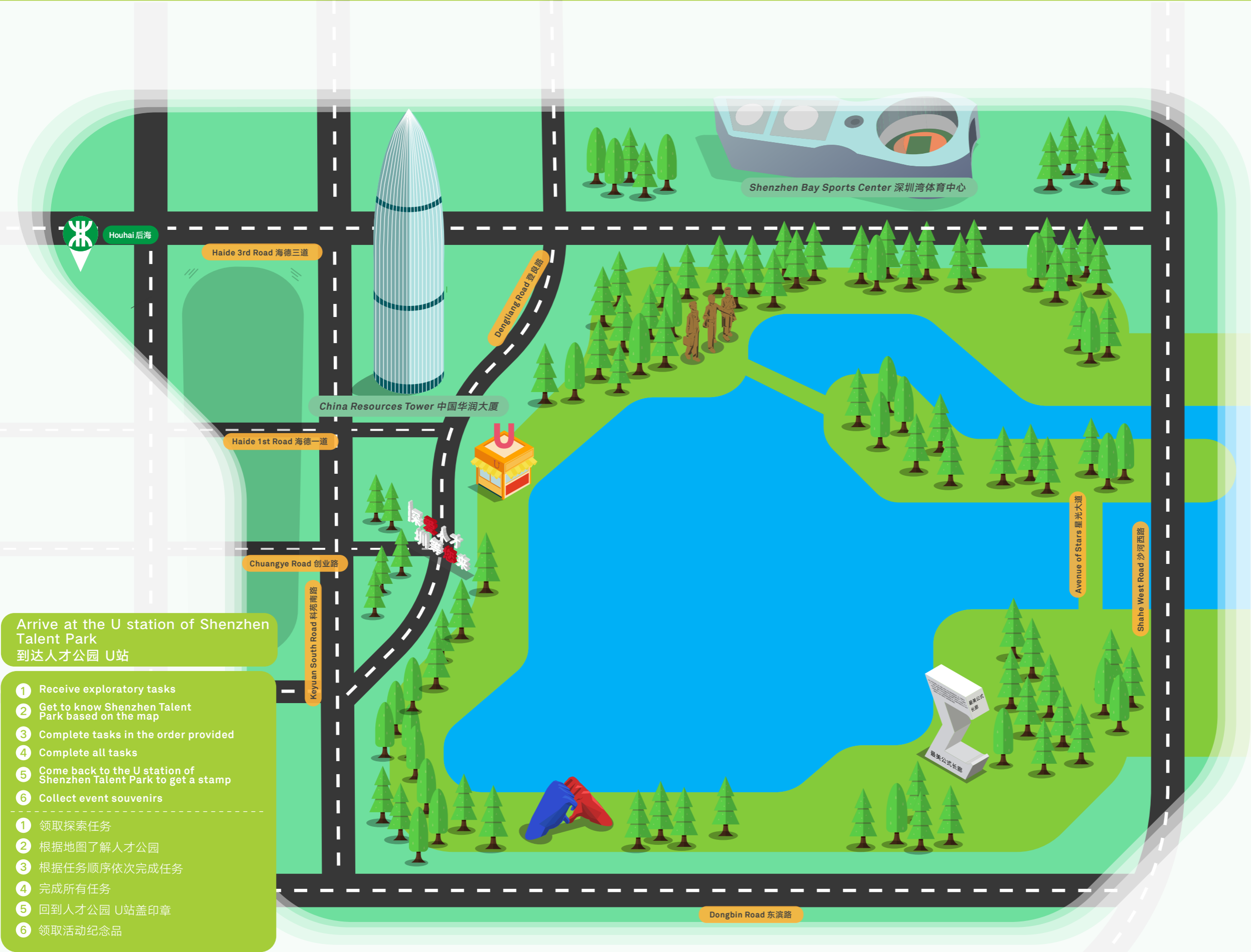
5



Who is the Shenzhen international goodwill ambassador?
Enter his name into
the WeChat Official Account to get the story
Hint: Chinese piano master

请问深圳的国际形象大使是谁?
将他的名字输入公众号获取故事信息
提示: 中国钢琴大师

Shenzhen Talent Park 深圳人才公园



Arrive at the U station of Shenzhen Talent Park
到达人才公园 U站

- 1

Receive exploratory tasks
- 2

Get to know Shenzhen Talent Park based on the map
- 3

Complete tasks in the order provided
- 4

Complete all tasks
- 5

Come back to the U station of Shenzhen Talent Park to get a stamp
- 6

Collect event souvenirs
- 1

领取探索任务
- 2

根据地图了解人才公园
- 3

根据任务顺序依次完成任务
- 4

完成所有任务
- 5

回到人才公园 U站盖印章
- 6

领取活动纪念品

JUST SHENZHEN

JUST SHENZHEN



Scan the QR code to start the game
关注公众号, 开始游戏

1



Please look for the location of the statue in the picture
Enter the English of “弄潮儿” into
the WeChat Official Account to get the story

请寻找图中雕像的所在地
将“弄潮儿”的英文名称
输入公众号获取故事信息

2



Scan the QR code to open
the wonderful journey of the Talent Park
扫码开启人才公园奇妙之旅

3



$$e^{i\pi} + (987654 \cdot 9 + 2) / 8 - (12345 \cdot 9 + 6) \cdot 10 = ?$$

Please locate the key information in
the Talent Park and complete the calculation
Enter the answer into
the WeChat Official Account to get the story

请在人才公园中寻找关键信息, 完成计算
将答案输入微信公众号获取故事信息

4



Who am I?
猜猜我是谁?

5



Locate the sculpture “Love” using the map
What building can you see through the sculpture?
Enter the name of the building into
the Wechat Official Account to get the story

请配合地图寻找爱心所在地
将“爱心”正对的建筑名称
输入微信公众号获取故事信息

OCT-LOFT 华侨城创意园



Arrive at the Penny Black Jazz Cafe of OCT-LOFT
到达华侨城创意园黑邮票爵士咖啡

- 1 Receive exploratory tasks
- 2 Get to know OCT-LOFT based on the map
- 3 Complete tasks in the order provided
- 4 Complete all tasks
- 5 Come back to the Penny Black Jazz Cafe of OCT-LOFT to get a stamp
- 6 Collect event souvenirs

- 1 领取探索任务
- 2 根据地图了解华侨城创意园
- 3 根据任务顺序依次完成任务
- 4 完成所有任务
- 5 回到华侨城创意园黑邮票爵士咖啡盖印章
- 6 领取活动纪念品

JUST SHENZHEN



Scan the QR code to start the game
关注公众号，开始游戏

1



Please follow the clues to uncover the answer
Enter the answer into
the WeChat Official Account to get the story
Hint: 12 letters
请根据线索解开答案
将答案输入公众号获得故事信息
提示：12个字母

2



Please look for a special bookstore located at OCT-LOFT
according to the information in the map
Some information about the bookstore name
is already shown in the graph
Enter the name of the bookstore into
the WeChat Official Account to get the story

请根据图中的信息寻找
位于OCT-LOFT的一家特殊书店
书店名称的部分信息已经展现在图形中
将书店名称输入公众号获取故事信息

3



Find the 7 letters hidden inside according to the pattern
Enter the answer into
the WeChat Official Account to get the story
Hint: The middle letter is "L"

根据图案寻找里面隐藏的7个字母
将答案输入公众号获得故事信息
提示：中间字母为“L”

4

M-street
K-street
C-street
T-street



As the city of design, OCT-LOFT advances
and promotes the development and influence of
creative industries by organizing creative markets
Enter the name of the creative market into
the WeChat Official Account to get the story

作为设计之都，华侨城创意园通过组织创
意市集来推动和提升创意产业的发展与影响
选择图中创意市集的名称
输入公众号获得故事信息

5



Please find your favorite coffee shop according to the card
information to participate and explore with the help of the map
Enter the name of your favorite coffee shop into
the WeChat Official Account to get the story

寻找一个你最喜欢的咖啡馆
配合地图进行探索体验
将你最喜欢的咖啡馆名称
输入公众号获取故事信息

Shekou Sea World 蛇口海上世界



Arrive at the U station of Shekou Sea World
到达蛇口海上世界 U站

- 1

Receive exploratory tasks
- 2

Get to know Shekou Sea World based on the map
- 3

Complete tasks in the order provided
- 4

Complete all tasks
- 5

Come back to the U station of Shekou Sea World to get a stamp
- 6

Collect event souvenirs
- 1

领取探索任务
- 2

根据地图了解蛇口海上世界
- 3

根据任务顺序依次完成任务
- 4

完成所有任务
- 5

回到蛇口海上世界 U站盖印章
- 6

领取活动纪念品

JUST SHEENZHEN

JUST SHENZHEN



Scan the QR code to start the game
关注公众号, 开始游戏

1



Find the name of the corresponding object based on
the information in the picture
Enter the answer into
the WeChat Official Account to get the story

根据图中信息寻找对应物的名称
将答案输入公众号获取故事信息

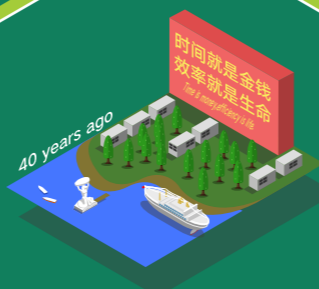
2



Please scan the QR code to complete
the mini game of construction

扫码完成建设小游戏

3

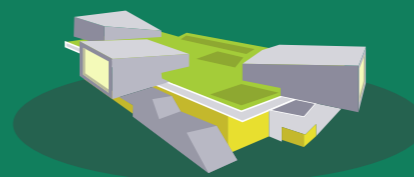


- ☐ The Belt and Road 一带一路
- ☐ The Three Agricultural Policy 三农政策
- ☐ The Reform and Opening-up 改革开放
- ☐ The Family Planning 计划生育

What is the reason for the huge change in Shekou in 40 years?
Enter the answer into
the WeChat Official Account to get the story

蛇口经历40年的巨大变化, 原因是什么?
将答案输入公众号获取故事信息

4



Please locate with the map to find
the building in Sea World
Enter the name of the building into
the WeChat Official Account to get the story

请配合地图在海上世界寻找该建筑
将建筑名称输入公众号获取故事信息

5



xiao 晓	cheng 成	jiang 江
yuan 袁	guo 国	su 苏
xue 学	geng 庚	chang 长

Please look for the mysterious statue on the seaward side
of the Sea World Culture and Art Center
Enter the statue name into
the WeChat Official Account to get the story

请寻找海上世界文化艺术中心
面海一侧的神秘雕像
将雕像名称输入公众号获取故事信息